

ULTRAPLATE



DRY VANS



SALES OFFICES

CENTRAL	855 655 8100
EAST	877 466 2622
SOUTH WEST	855 648 0503
WEST	855 648 0504



www.manac.us
www.trailmobiletrailers.net

STURDY, RELIABLE, AND LONG-LASTING. TO TAKE YOU WHEREVER YOU WANT. **HOWEVER YOU WANT.**



DRY VANS



BUILT RUGGED, BUILT LIGHT

Standard features

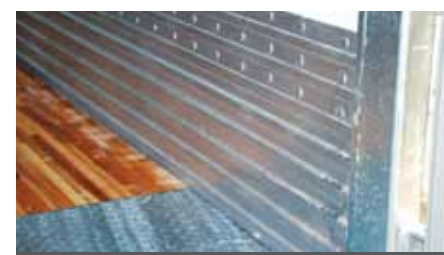
- **Heavy Duty 5 post front wall design**
Benefit: Increases strength
- **80,000 PSI one piece bottom plate and hat shaped crossmembers galvanized**
Benefit: Reduces maintenance cost
- **Galvanized slider rails and crossmembers**
Benefit: Increases residual value and trailer life
- **Galvanized 24" steel threshold**
Benefit: Eliminates deterioration of wood floor at rear

Standard specifications do not apply to multi-axle units. Standard features or specifications subject to change without notice.



- LED lights
- Galvanized door frame
- Unique post design for easy panel replacement
- Side panels thickness 7.5 mm. Industry's thickest Composite Wall
- Top rail with interchangeable corner caps
- 12" internal bulkhead
- Steel galvanized kickplate
- 101 3/8" Inside width
- Galvanized bolted landing gear structure
- Bolt-on galvanized bumper

OPTIONAL FEATURES



ULTRAPLATE XD Heavy duty bottom rail 16" high kick plate and 1/2" thick rib



Roll-up door



Pintle hook



Aerodynamic skirt.

